

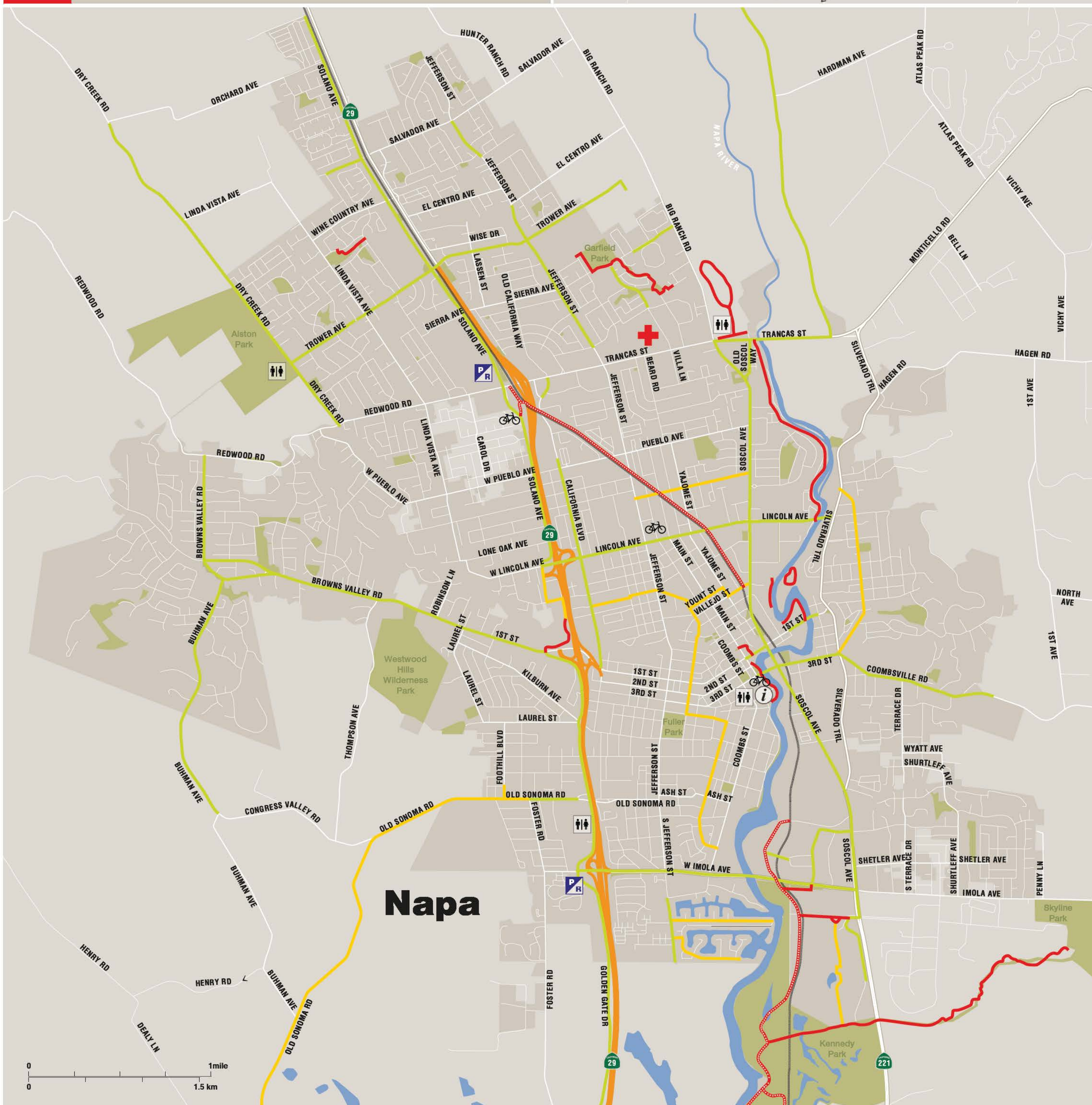
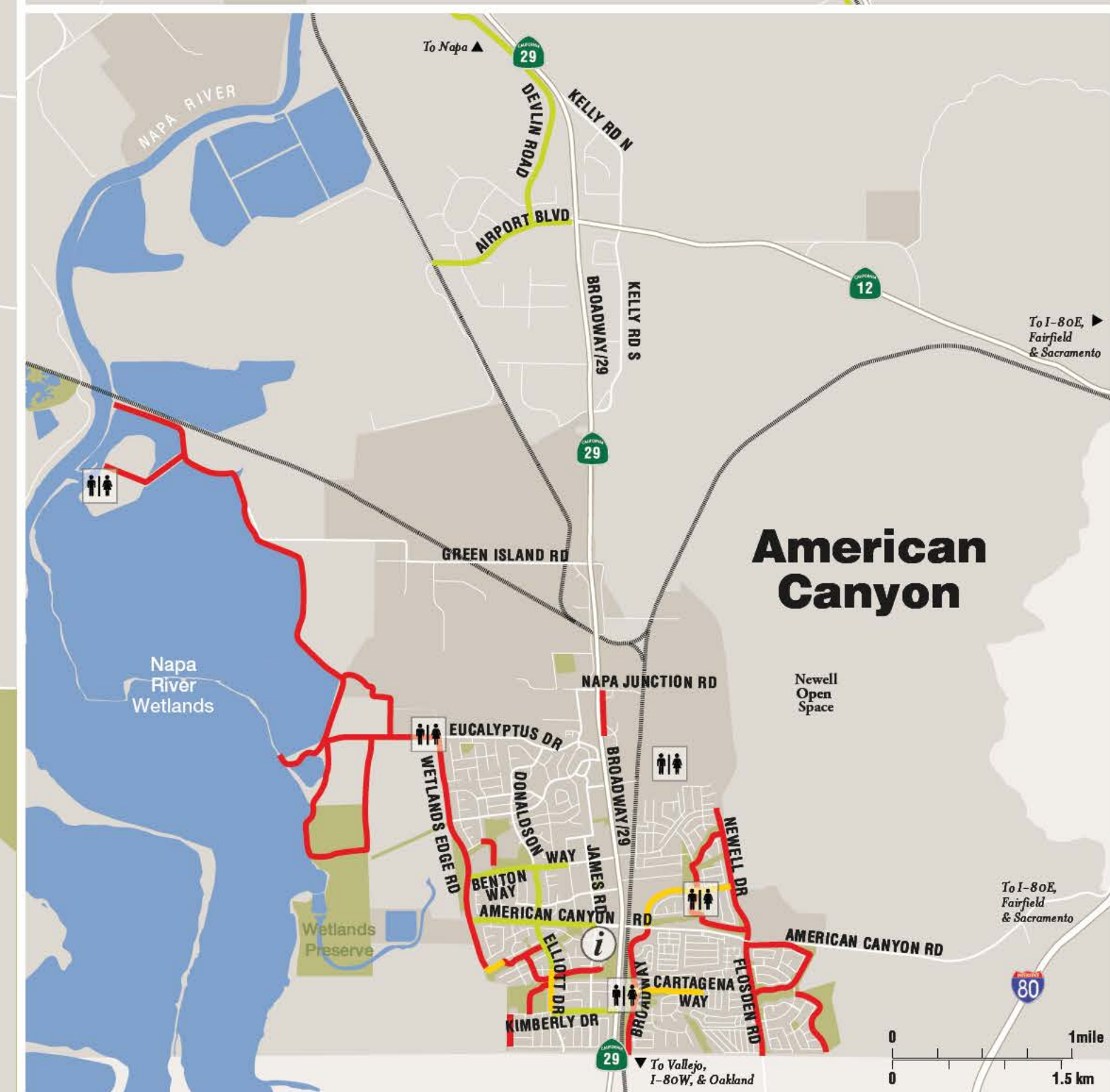
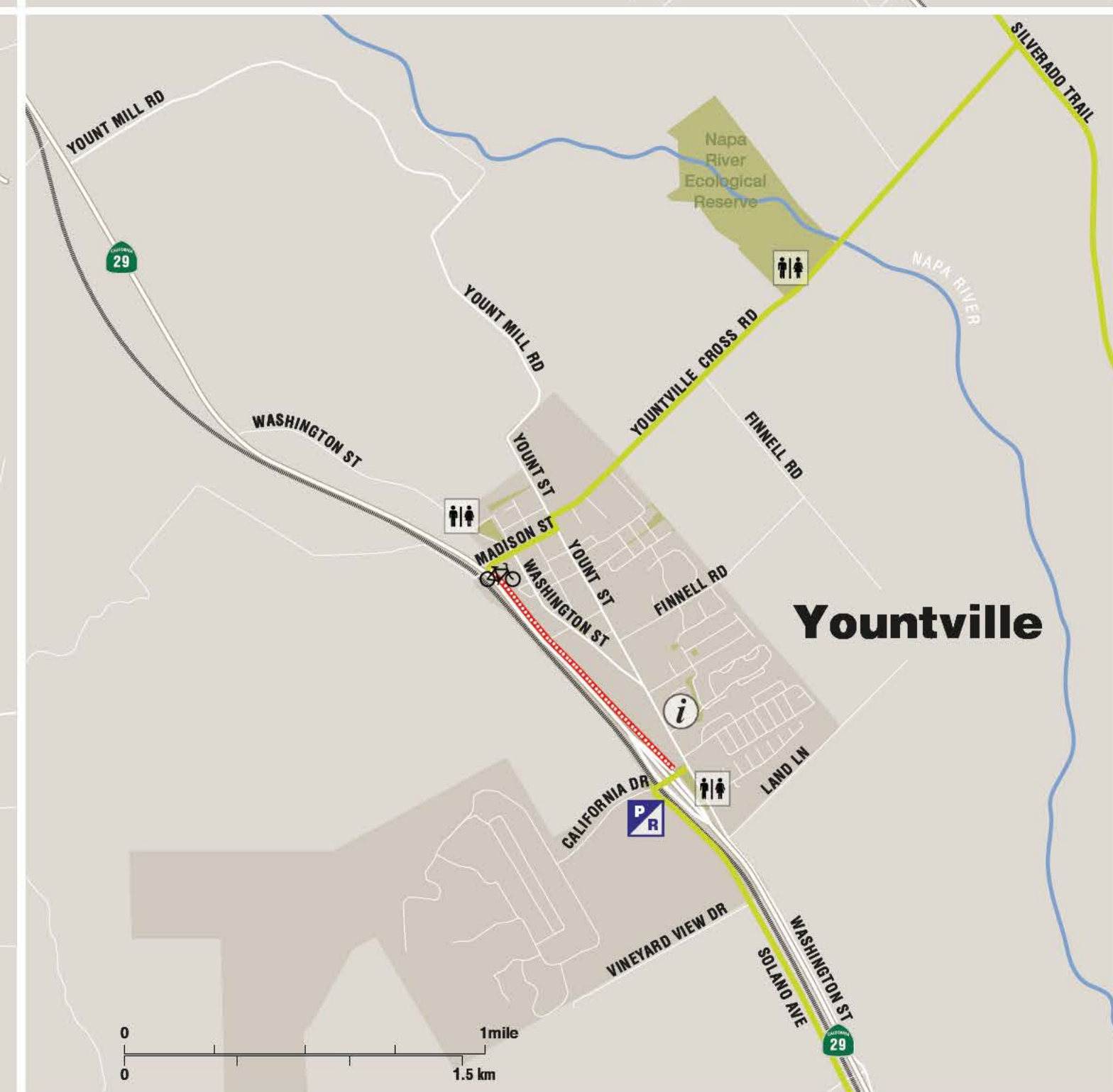
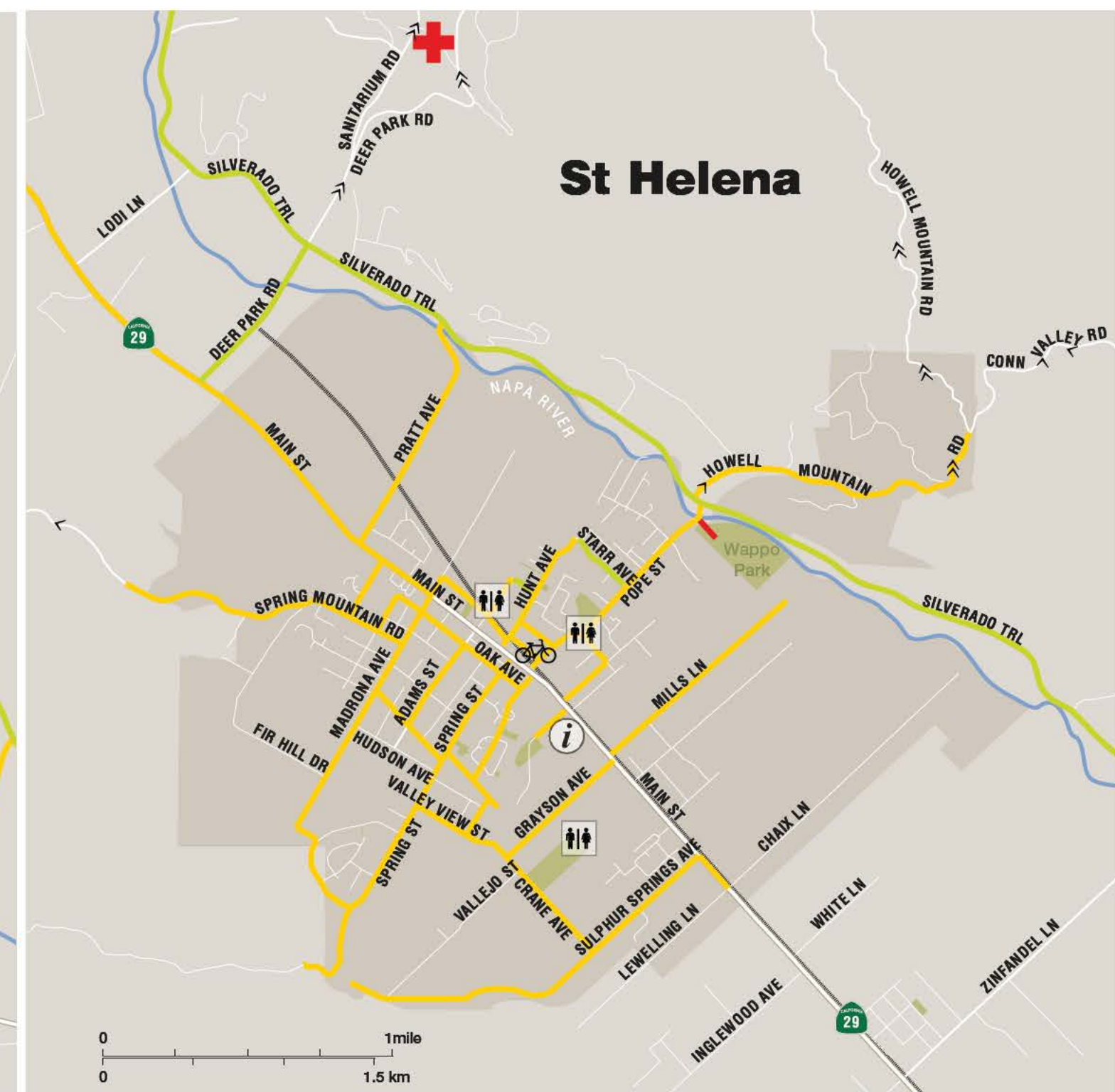
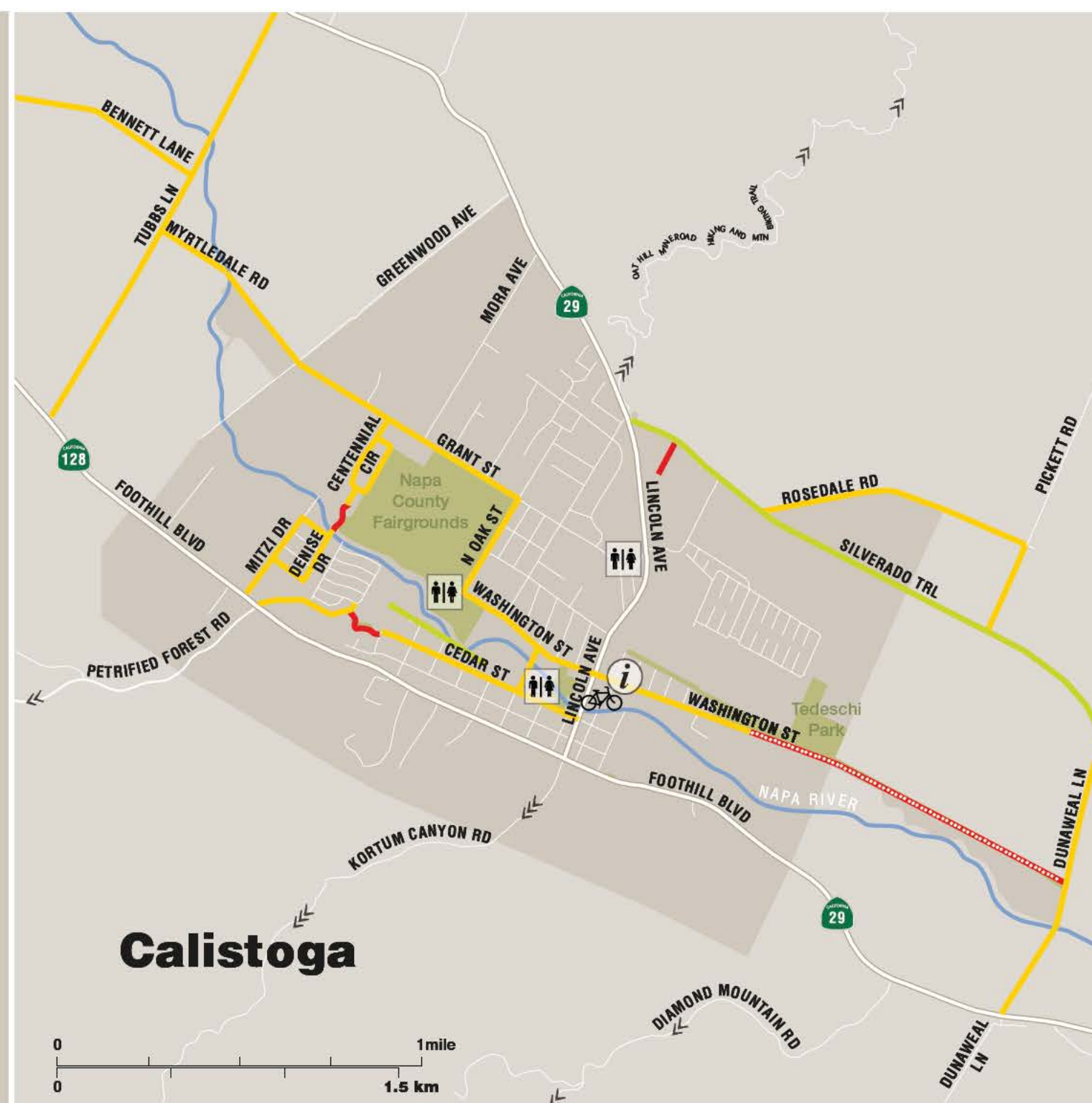
PROCEEDS  
BENEFIT  
NAPA VALLEY  
VINE TRAIL

**Napa County Boundary**

- Highways
- Arterials
- Roads
- Freeway—No Bikes
- Bike Class I
- Bike Class II
- Bike Class III
- Vine Trail
- Railroad
- Bodies of Water
- Parks
- Sustained Climbs
  - 3-5%
  - 6-8%
  - 9%
- Napa** Cities
- Rest Areas
- Bike Shop / Rentals
- Park & Ride
- Hospital
- Welcome Center/ Information

American Canyon is where your Napa Valley experience begins with wetland and open space nature preserves that make it a haven for bird lovers.

WE EXPRESS OUR SPECIAL APPRECIATION TO THE NAPA COUNTY TRANSPORTATION AND PLANNING AGENCY (NCTPA) FOR ITS TECHNICAL SUPPORT WITH THIS MAP.





# TIPS & RESOURCES FOR NAPA COUNTY

## Bicycling in Napa County

Napa County, with its varied terrain, beautiful scenery and mild weather is an ideal place to bicycle for transportation and recreation. All five cities are flat and compact, which is perfect for commuting, running errands, and sight-seeing by bike. Travel between towns via bicycle is not quite as easy because of the distances, limited transit connections, and roads with motor vehicle traffic. Outside of the cities and valley floor, the County's mountains, valleys, and scenery provide a world class riding experience that is challenging and rewarding for recreational cyclists.

There is strong interest in bicycling (and walking) in Napa County spurred on by the need to minimize greenhouse gas emissions, promote a healthier lifestyle, reduce traffic congestion, and to provide non-motorized transportation alternatives between our communities. This map has been developed as a tool for residents and visitors alike to ride to their destinations in the County by the safest routes available.

This bike map shows the current status of our vision to build a system of interconnected local bicycle networks, made up of all types of bike-ways. These include Class I multi-use paths, physically separated from roadways, Class II bike lanes, designated by striping on roads, and Class III bike routes, which are roadways designated to be shared by bicycles and other vehicles.

The routes shown on this map are used daily by bicyclists in Napa County. However, not all routes shown have been designated safe by a public agency. You must use your own good judgment in assessing the safety of any route you choose and ride the roads at your own risk. In deciding whether a route is safe for you, please consider: your bike handling skills, your experience riding in traffic, the time of day, the volume of traffic, the weather, other road conditions, and your own level of comfort using the selected route.

Note that most mountain roads in Napa County are narrow, winding, and may have high seasonal traffic volumes, and some steep sections. Know your equipment, your ability, and the area in which you are riding, and prepare accordingly. Cell phone service in remote areas is not assured. Be self-sufficient, keep your equipment in good repair, and carry necessary supplies for changes in weather and other conditions. A well-executed trip is a satisfaction to you and not a burden or offense to others. Always wear a helmet. Thank you!

## Code of Courtesy for Using Class I Bicycle Paths

Many "bike paths" in Napa County are multi-use paths meant for bicyclists, pedestrians and skaters. Please respect other trail users as well as private landowners adjacent to the trails by abiding by the following:

- Stay on marked routes and do not leave the path
- Keep dog(s) on leash and under control. Be sure to stoop and scoop
- Respect the privacy of people living adjacent to the path
- Do not disturb farm animals or wildlife
- Leave flowers, plants and trees for others to enjoy
- Please stay to the right and allow others to pass to your left
- Cyclists are to ring their bell or call out to announce their presence when approaching other trail users from behind
- Leave nothing but thanks and take nothing but pictures

## Bicycle Law and Safety Tips

Dress Bright,  
Use Lights!



Every person riding a bicycle on a roadway or any paved shoulder has all of the rights and responsibilities applicable to the driver of a motor vehicle. Obeying traffic laws builds respect for cyclists and reduces the incidence of motorist rage towards bicycle riders. Recognize that regardless of rights, a bicyclist is going to bear the brunt of the damage in a collision with a car, so BE BRIGHT when riding:

- Wear a helmet
- Wear bright vivid colors to increase visibility to motorists
- Wear reflective apparel and reflective ankle straps when riding at night
- Turn on bright LED head and tail lights at all times to help motorists see you
- Stay alert – avoid wearing audio headsets
- Never ride against traffic
- Obey traffic signs and signals, and basic right-of-way rules
- Use hand signals to tell other road users what you intend to do
- Ride in a straight line to the right of traffic, but about a car door's width away from parked cars
- Don't ride to the curb between parked cars unless they are far apart

## Follow lane markings:

- Don't turn left from the right lane
- Don't go straight in a right-turn-only lane
- Stay to the left of the right-turn-only lane if you are going straight

## Choose the best way to turn left:

- Signal and use the lanes like a car, or
- Make your turn as a pedestrian by dismounting and walking your bike across the road
- Park considerably to not interfere with pedestrian and vehicle movement
- Carry your I.D. and emergency contact information

## Transit Information

The VINE, the Napa Valley's fixed-route bus system, provides safe, affordable and accessible transportation for all residents and visitors. All buses in Napa County are equipped with exterior bicycle racks that can carry at least two bicycles (some are equipped with racks to carry three).

Complete bus route and schedule information is available online at: <http://ridethevine.com>

"Where's My Bus?" Is an online feature that allows smart phones to see when a bus will arrive at any VINE bus stop. Access it here: <http://www.nctpa.net/routes-schedules/wheres-my-bus.html>

The Route 11 bus and the VINE 29 Commuter Express connect to the Vallejo Ferry Terminal. Bikes are welcome on the ferry to San Francisco.

## Law Enforcement and Public Works

Here are the contact numbers for police or road maintenance concerns. 911 is the emergency number county-wide.

	POLICE	PUBLIC WORKS
American Canyon	(707) 551-0600	(707) 647-4550
Napa	(707) 257-9550	(707) 257-9520
Napa County	(707) 253-4509	(707) 944-0196
Yountville	(707) 944-9228	(707) 944-8851
St. Helena	(707) 967-2850	(707) 968-2658
Calistoga	(707) 942-2810	(707) 942-2828

## Rest Stops on Silverado Trail

Look for this logo on the  
Silverado Trail for  
bike-friendly rest stops.



Until the Napa Valley Vine Trail (Class I) is completed, the best bicycling route up and down Napa Valley is the Silverado Trail, on the east side of Napa Valley. It features 26 miles of Class II bike lanes, from Trancas Street in Napa to the junction of Highway 29 in Calistoga. Crossroads provide riders access to the town of Yountville, the communities of Rutherford and Oakville, and to the city of St. Helena.

The east side of the valley is rural, with few public facilities. To supplement these, several wineries on Silverado Trail have offered use of their facilities for cyclists needing a rest room, water, or just wanting to take a break. Here are the places where you can take a break when riding the trail, starting from Napa, heading North to Calistoga:

- Judd's Hill Winery 2332 Silverado Trail | Napa
- Pine Ridge Winery 5901 Silverado Trail | Napa
- Napa River Access 1700 Yountville Cross Road | Yountville (1/4 mile west of Napa River) (Toilet Only)
- Jacob Melly Park Pope Street | St. Helena
- ZD Wines 8383 Silverado Trail | Napa
- Hunnicutt Napa Valley 3524 Silverado Trail North | St. Helena
- Dutch Henry Winery 4310 Silverado Trail | Calistoga
- Lava Vine Winery 965 Silverado Trail | Calistoga

## Bike Shops and Bike Rentals

### Shops

These businesses provide bicycle sales and service:

- Bicycle Works 3335 Solano Ave. | Napa 707-253-7000
- Calistoga Bikeshop 1318 Lincoln St. | Calistoga (707) 942-9687
- Napa River Velo 680 Main St. | Napa (707) 258-8729
- St. Helena Cyclery 1156 Main St. | St. Helena (707) 963-7736
- The Hub Bicycles 2500 Jefferson St. | Napa (707) 253-2453

### Rentals

These businesses provide bicycle rentals:

- Calistoga Bikeshop 1318 Lincoln St. | Calistoga (707) 942-9687
- Getaway Adventures 301 Post St. | Napa (707) 753-0866
- Napa River Velo 680 Main St. | Napa (707) 258-8729
- Napa Valley Bike Tours 6795 Washington St. | Yountville (707) 251-8687
- Napa Valley Adventure Tours 1147 1st St. | Napa (707) 259-1833
- St. Helena Cyclery 1156 Main St. | St. Helena (707) 963-7736
- Velo Vino 709 Main St. | St. Helena (707) 968-0625

## Bicycle Clubs and Bicycle Organizations

The Napa Bicycle Coalition, known as NapaBike, is working with the community to develop more bicycling resources in the County—from bike paths to safety courses to bike maps. Napa Bike has partnered with Visit Napa Valley and The Napa Valley Vine Trail Coalition to produce this map. We express special appreciation to the Napa County Transportation and Planning Agency (NCTPA) for its technical support. This map is an important step toward enabling achievement of the County's long-range strategic goal of having 10 percent of all trips made in Napa County be by bicycle.

Here is a list of other bicycling organizations important to bicycling in the Bay Area:

- California Bicycle (916) 446-7558 | [www.calbike.org](http://www.calbike.org)
- Eagle Cycling Club [www.eaglecyclingclub.org](http://www.eaglecyclingclub.org)
- East Bay Bicycle Coalition (510) 845-7433 | [www.ebbc.org](http://www.ebbc.org)
- League of American Bicyclists (202) 822-1333 | [www.bikeleague.org](http://www.bikeleague.org)
- Marin County Bicycle Coalition (415) 456-3469 | [www.marinbike.org](http://www.marinbike.org)
- Napa County Bicycle Coalition (707) 812-1700 | [www.napabike.org](http://www.napabike.org)
- North Bay BMX (707) 256-0269 | [www.northbaybmx.com](http://www.northbaybmx.com)
- Rails-to-Trails Conservancy (415) 814-1100 | [www.railstrails.org](http://www.railstrails.org)
- San Francisco Bicycle Coalition [www.sfbike.org](http://www.sfbike.org)
- San Francisco Randonneurs [www.sfrandonneurs.org](http://www.sfrandonneurs.org)
- Silicon Valley Bicycle Coalition (408) 287-7259 | [www.bikesiliconvalley.org](http://www.bikesiliconvalley.org)
- Sonoma County Bicycle Coalition (707) 545-0153 | [www.bikesonoma.org](http://www.bikesonoma.org)

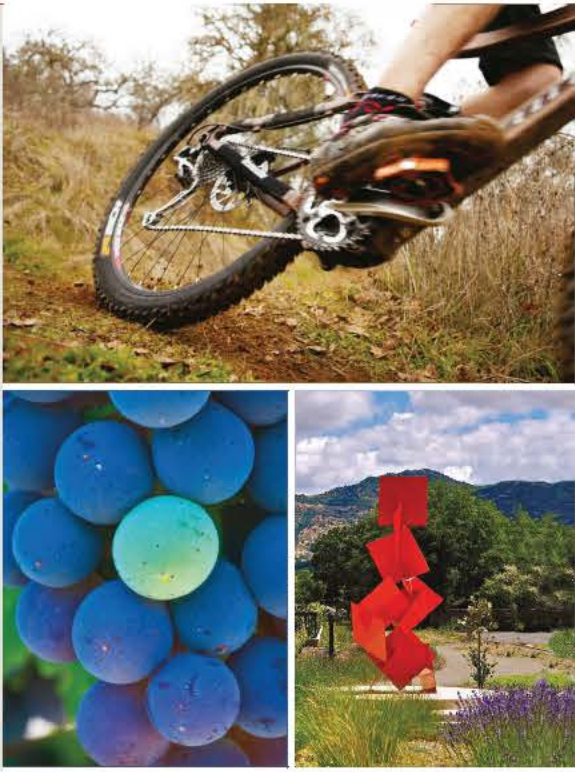
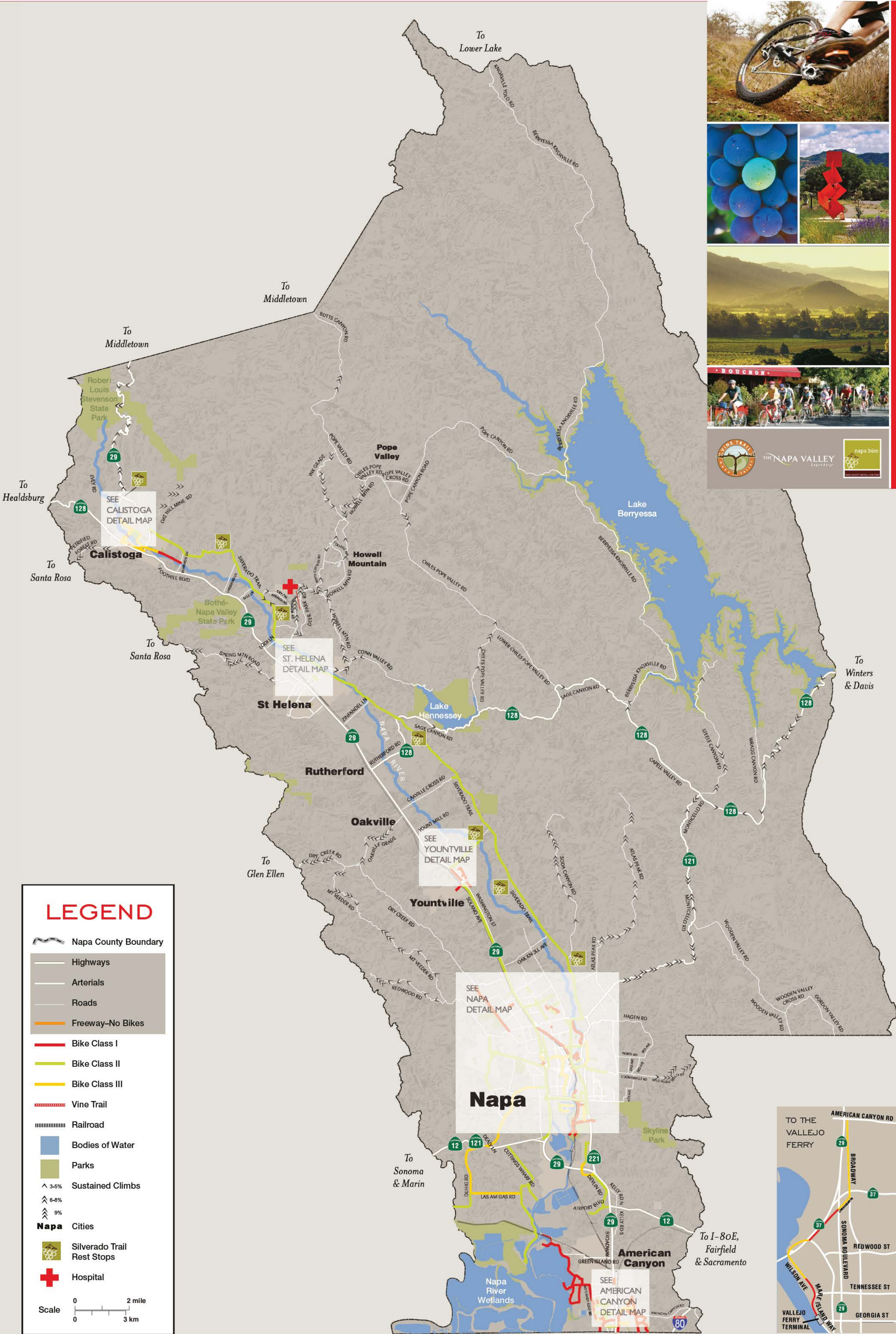
## Tourism Information

The Napa Valley Welcome Center in the city of Napa and the visitor information centers in each town offer a plenitude of free maps, brochures, and bike-friendly lodging availability. And be sure to check out <http://www.visitnapavalley.com> which is a great resource for visitors.

## The Vine Trail and Ag Respect

THE NAPA VALLEY VINE TRAIL COALITION is a grass-roots nonprofit with a vision to build a walking/biking trail system connecting the entire Napa Valley. We're working to design, fund, construct, and maintain 47 safe and scenic miles of level, paved, family-friendly, free-access Class I trail, stretching from the Vallejo Ferry to Calistoga. While completion will take time, significant sections of the Vine Trail will open within the next 2-5 years. Follow our progress at [vinetrail.org](http://vinetrail.org). A portion of map proceeds benefits the Vine Trail.

TRAILS & AG RESPECT: Napa County is an agricultural community. Vineyards and lands adjoining trails are not public parks. Respect private property, do not trespass on agricultural operations or interfere with crops. The Vine Trail and all Napa County trails are designed in cooperation with the celebrated Ag Preserve—a pioneering land-zoning ordinance that protects farming and open space. Check out this AG RESPECT TRAILSIDE GUIDE and support our local farmers.



BIKE NAPA VALLEY

PROCEEDS  
BENEFIT  
NAPA VALLEY  
VINE TRAIL

AG

RESPECT

AGRESPECT.ORG

RESPECT OUR WORKING FARMS & VINEYARDS  
EXPECT AGRICULTURAL ACTIVITIES & KEEP CLEAR  
STAY WITHIN TRAIL BOUNDARIES (PETS, TOO)  
PREVENT SPREAD OF NON-NATIVE SPECIES  
ELIMINATE ALL TRACE & TRASH (FROM PETS, TOO)  
CHECK YOUR NOISE LEVELS  
TAKE RESPONSIBILITY AND REPORT PROBLEMS

AGRESPECT.ORG

THE NAPA VALLEY  
Legendary.

VISITNAPAVALLEY.COM



VINETRAIL.ORG



AGRESPECT.ORG



NAPABIKE.ORG