

2014

# I OAKLAND

## Bikeways Map

235 miles of bikeways! [www.oaklandbikes.info](http://www.oaklandbikes.info)

This free map is part of Oakland's efforts to be a city where bicycling is fully integrated into daily life, providing transportation and recreation that are both safe and convenient (Bicycle Master Plan, 2007). It depicts City-designated bikeways plus proposed bikeways with street conditions that are supportive of bicycling. However, individuals must determine their own skill levels and physical abilities. Know the rules of the road. Take a bike safety class. Wear a helmet. Be visible at night. Give respect, get respect, and *have fun!*

- Bikeways**  
Bikeways are corridors designated for bicycle travel. This map depicts six types of bikeways, each with specific characteristics:
- Bike paths** provide a paved right-of-way that is completely separated from the street. They are typically shared with pedestrians and often called mixed-use paths.
  - Bike lanes** are striped on streets and designated specifically for bicyclists. They are Oakland's preferred treatment for busy streets.
  - Bike routes** have bicyclists sharing travel lanes with drivers and are designated because they provide better connectivity than other nearby streets.
  - Arterial bike routes** are installed on busier streets where bike lanes are not possible and parallel streets do not provide adequate connectivity. Oakland's arterial bike routes include sharrow markings and signs for bicyclists.
  - Bike boulevards** are bike routes on quiet residential streets that prioritize through trips for bicyclists. Oakland's bike boulevards are a work in progress, including sharrow markings and traffic calming.
  - Proposed bikeways** on this map are a subset of streets designated for improvements by Oakland's Bicycle Master Plan. They have wide travel lanes or low traffic volumes, and provide useful connections.

**Wayfinding**  
This map features the 100+ destinations being supported on Oakland's bicycle guide signs. These destinations include downtown, adjoining cities, transit stations, commercial districts, parks, landmarks, colleges, hospitals, and high schools. The signs follow the general conventions of highway guide signs to communicate information in a clear, consistent, and space-efficient format. For more information, see [www.oaklandbikes.info/design](http://www.oaklandbikes.info/design).



BIKE ROUTE

Children's	0.5
MacArthur	1.2
Downtown	2.2

- City Resources**
- Report all maintenance issues to the Public Works Call Center: [www.seclickfix.com/oakland](http://www.seclickfix.com/oakland) (mobile app available), [www2.oaklandnet.com/ReportaProblem](http://www2.oaklandnet.com/ReportaProblem), or (510) 615-5566
  - Report transportation-related concerns to the Transportation Services Division: (510) 238-3466
  - Request a bike rack from the Bicycle & Pedestrian Facilities Program: [www.oaklandbikes.info/bikerack](http://www.oaklandbikes.info/bikerack)
  - Learn about Oakland's Bicyclist & Pedestrian Advisory Commission: [www.oaklandbikes.info/bpac](http://www.oaklandbikes.info/bpac)

- Oakland-related Bicycle Organizations**
- |                                     |  |
|-------------------------------------|--|
| Bike East Bay                       | <a href="http://www.bikeeastbay.org">www.bikeeastbay.org</a>                   |
| The Crucible                        | <a href="http://www.thecrucible.org">www.thecrucible.org</a>                   |
| Cycles of Change                    | <a href="http://www.cyclesofchange.org">www.cyclesofchange.org</a>             |
| Grizzly Peak Cyclists               | <a href="http://www.grizzlypeakcyclists.org">www.grizzlypeakcyclists.org</a>   |
| Oakland Yellowjackets               | <a href="http://www.oaklandyellowjackets.org">www.oaklandyellowjackets.org</a> |
| Royal Ground Velo Raptors           | <a href="http://www.veloraptors.com">www.veloraptors.com</a>                   |
| The San Francisco Bay Trail Project | <a href="http://www.baytrail.org">www.baytrail.org</a>                         |
| Walk Oakland Bike Oakland           | <a href="http://www.wobo.org">www.wobo.org</a>                                 |

**Contact Us**

Bicycle & Pedestrian Facilities Program  
City of Oakland, Public Works Department  
250 Frank H. Ogawa Plaza, Suite 4344, Oakland, CA 94612  
Phone: (510) 238-3983 | Fax: (510) 238-7415  
Email: [bikeped@oaklandnet.com](mailto:bikeped@oaklandnet.com). Visit [www.oaklandbikes.info](http://www.oaklandbikes.info) for extensive information on Oakland's bicycle facilities and programs.



2010-2014

© 2014 Copyright City of Oakland, California | Cartography and Graphic Design by Jake Coolidge  
Base data courtesy of the City of Oakland's Department of Information Technology, GIS Unit.  
Additional data from OpenStreetMap.org.

Funded by Oakland's share of Measure B, Alameda County's half-cent transportation sales tax administered by the Alameda County Transportation Commission.

**Bikeway Types**

Bike Path	Arterial Bike Route
Bike Lane	Bike Boulevard
Bike Route	Proposed Bikeway

Hill with 50 ft. elevation gain

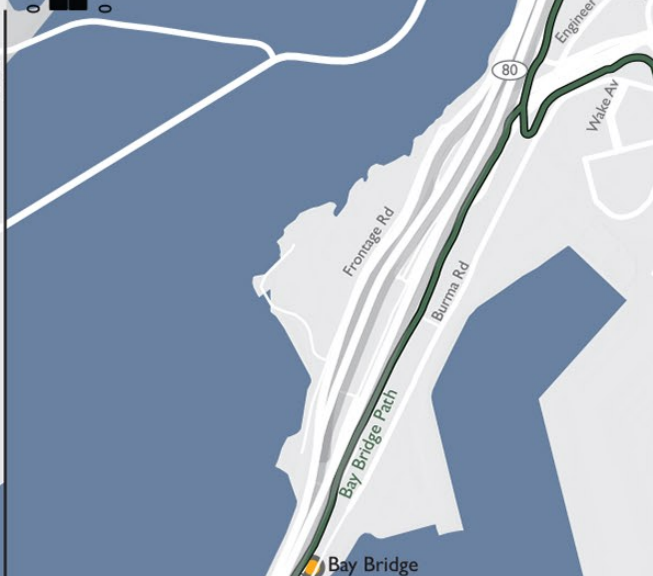
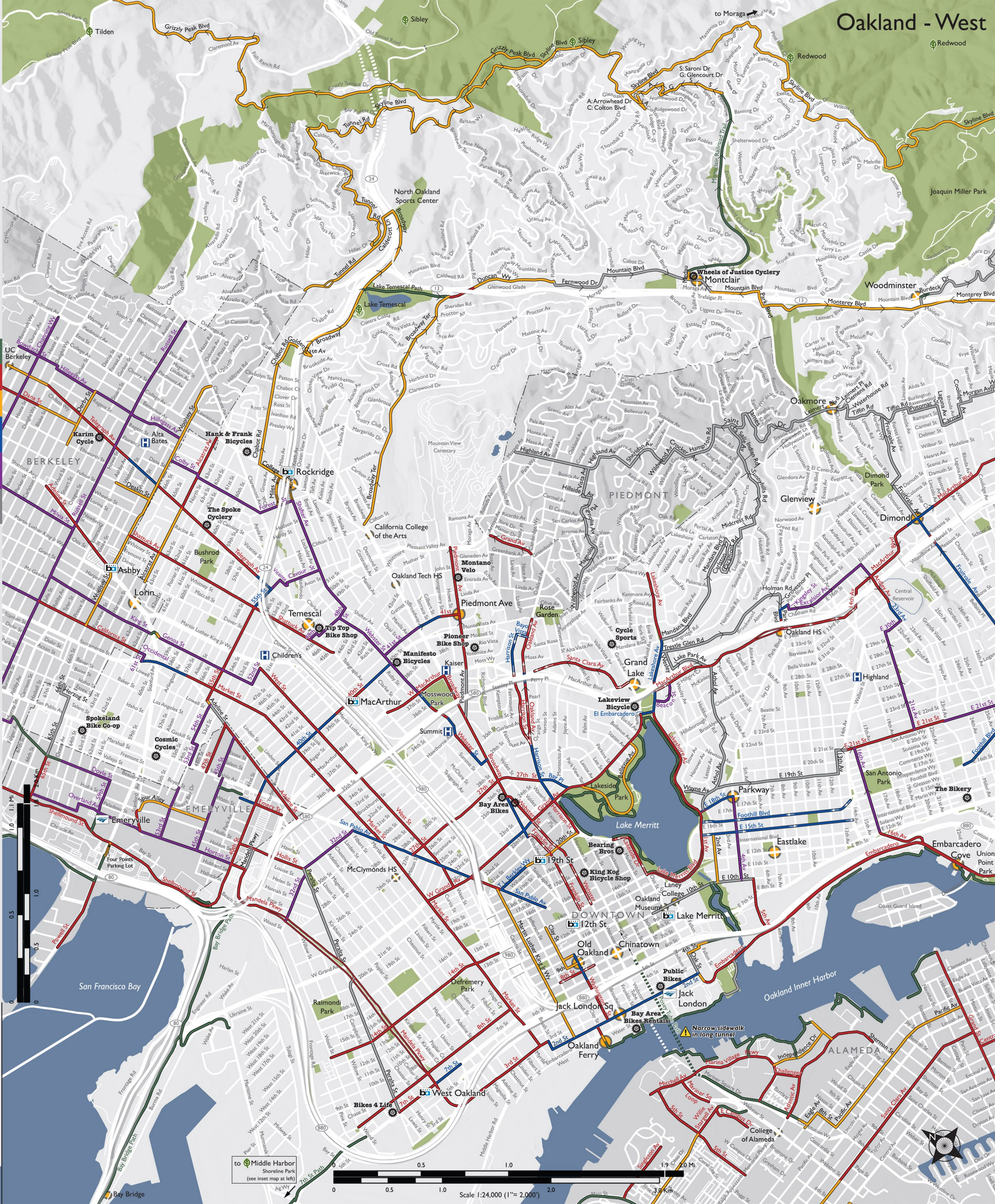
Sample Street Grades

3% 6% 9%

**Destinations**

Commercial District	Hospital
BART Station	East Bay Regional Park
Amtrak Station	Bike Shop
Landmark, College, or High School	

trail continues for another 0.25 mi



to Middle Harbor  
Shoreline Park  
(see inset map at left)

Scale 1:24,000 (1" = 2,000')