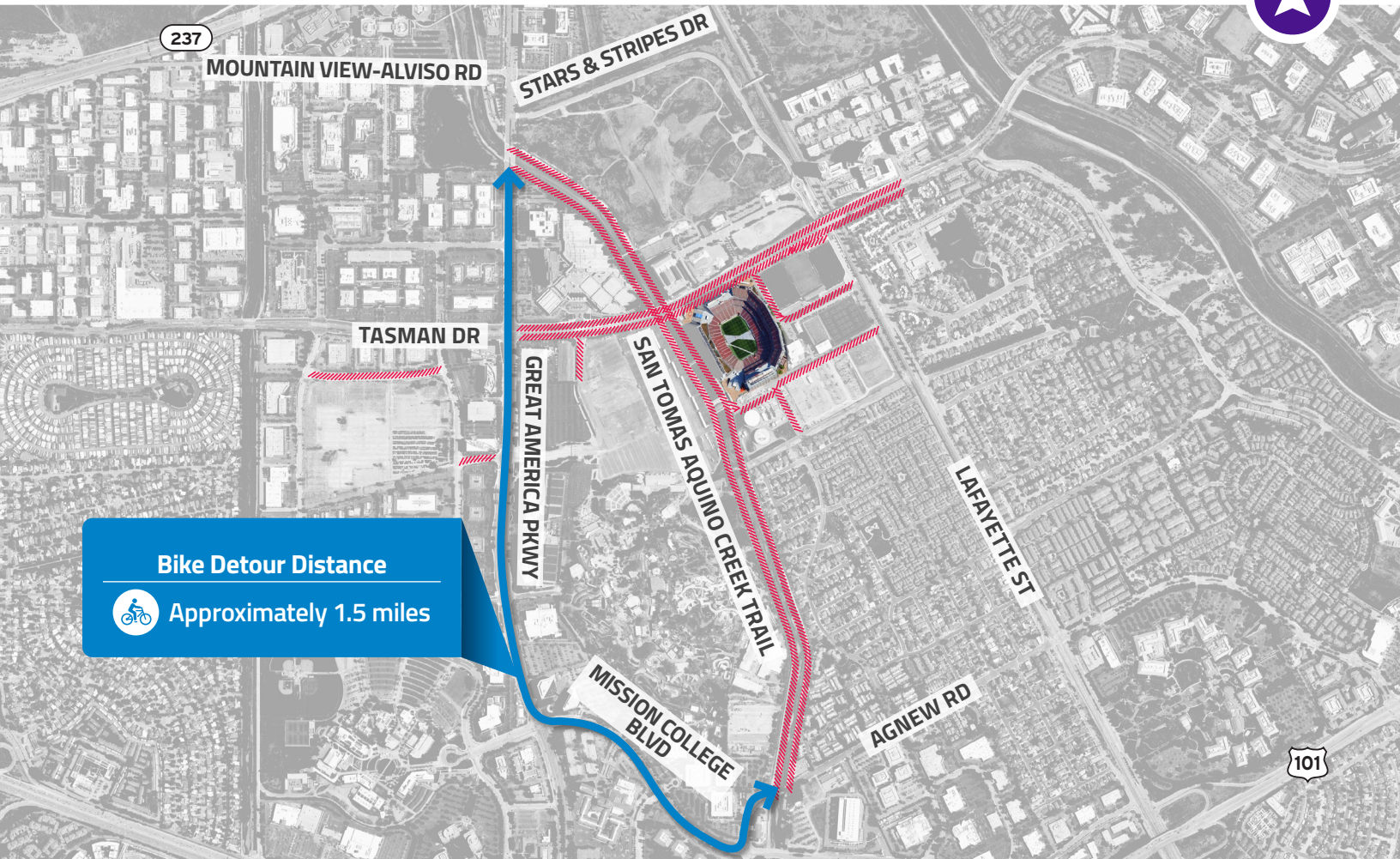


# NOTICE: BIKE DETOUR



**Bike Detour Distance**  
 Approximately 1.5 miles

**LEGEND:** Bike Detour | Road Closures

**THIS CLOSURE WILL BE IN EFFECT FOR MATCH DAY. REFER TO CLOSURE TABLE SCHEDULE.**  
 To learn more about the road closures impacting the Santa Clara area for the 2026 FIFA World Cup, please visit:  
<https://www.sfbayareafwc26.com/transit>

The San Tomas Aquino Creek Trail will be closed on the 6 match days during the FIFA World Cup. See the closure schedule below for dates and times. During this period, bike traffic will be detoured around the closure. A detour will be posted to use Mission College Blvd and Great America Parkway to bypass the Creek Trail closure. Notifications will be posted at the trail connections at Agnew Road and Great America Parkway directing cyclists to the detour route.



Scan for more details

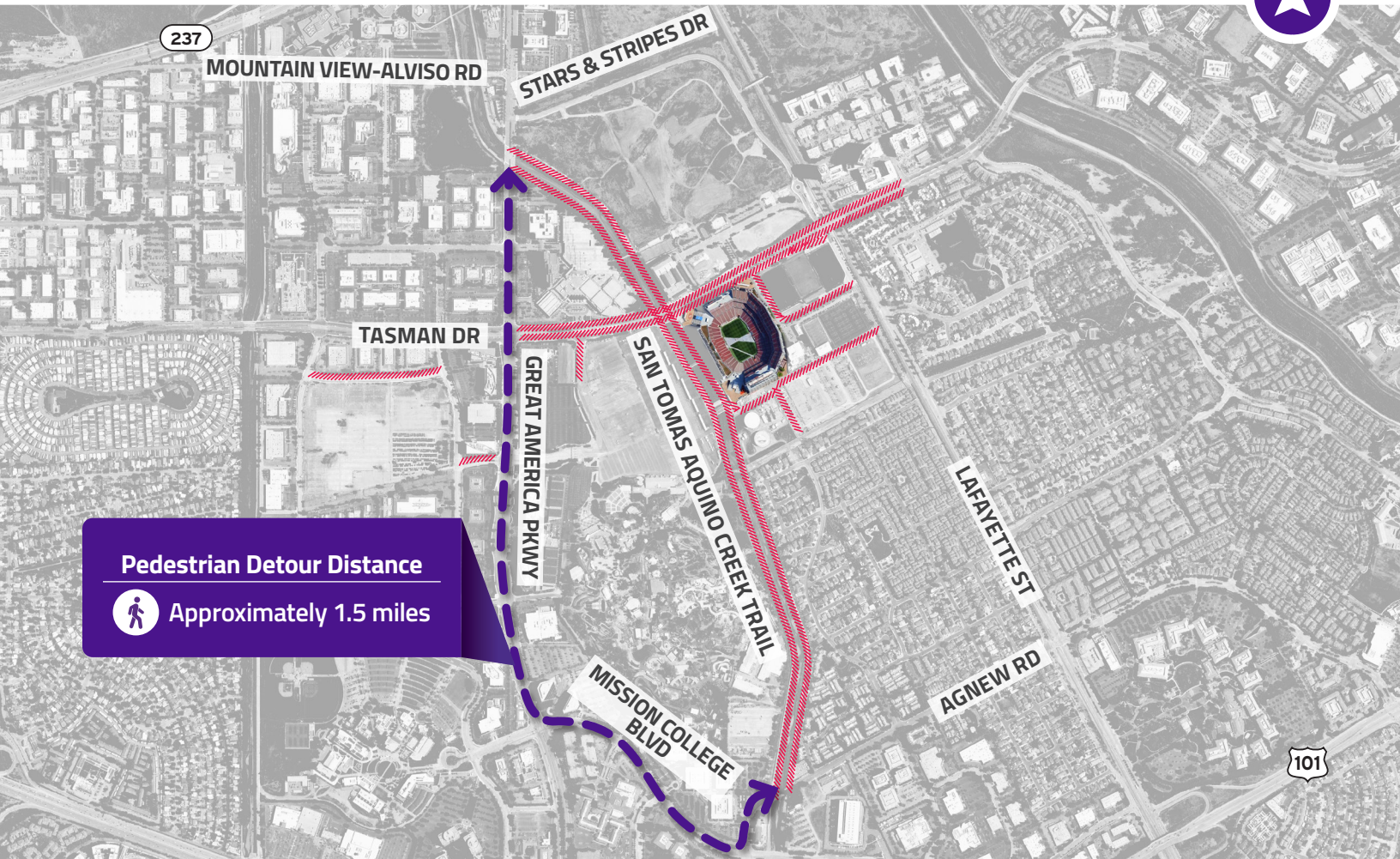
MATCH DAY CLOSURE SCHEDULE				
DATE	PHASE 1	PHASE 2	STACT CLOSURE	TASMAN REOPEN
June 13	12AM - 8AM	8AM-10PM	6AM-6:30PM	10PM (June 13)
June 16	8AM - 5PM	5PM-5AM*	8AM-3:30AM*	5AM (June 17)
June 19	8AM - 4PM	4PM-5AM*	8AM-2:30AM*	5AM (June 20)
June 22	8AM - 4PM	4PM-5AM*	8AM-2:30AM*	5AM (June 23)
June 25	8AM - 3PM	3PM-5AM*	8AM-1:30AM*	5AM (June 26)
July 1	8AM - 1PM	1PM-5AM*	8AM-11:30PM	5AM (July 2)

**Phase 1:** Tasman Closure from Great America Pkwy to Calle Del Sol  
**Phase 2:** Expanded Tasman Closure from Great America Pkwy to Lick Mill Blvd  
 \* Following day.

*Safety and security associated with the 2026 FIFA World Cup will require the temporary closure of public infrastructure around SF Bay Area Stadium.*



# NOTICE: PEDESTRIAN DETOUR



## Pedestrian Detour Distance



Approximately 1.5 miles

**LEGEND:** Pedestrian Detour | Road Closures

**THIS CLOSURE WILL BE IN EFFECT FOR MATCH DAY. REFER TO CLOSURE TABLE SCHEDULE.**

To learn more about the road closures impacting the Santa Clara area for the 2026 FIFA World Cup, please visit:  
<https://www.sfbayareafwc26.com/transit>

The San Tomas Aquino Creek Trail will be closed on the 6 match days during the FIFA World Cup. See the closure schedule below for dates and times. During this period, pedestrian traffic will be detoured around the closure. A detour will be posted to use Mission College Blvd and Great America Parkway to bypass the Creek Trail closure. Notifications will be posted at the trail connections at Agnew Road and Great America Parkway directing pedestrians to the detour route.



Scan for more details

### MATCH DAY CLOSURE SCHEDULE

DATE	PHASE 1	PHASE 2	STACT CLOSURE	TASMAN REOPEN
June 13	12AM - 8AM	8AM-10PM	6AM-6:30PM	10PM (June 13)
June 16	8AM - 5PM	5PM-5AM*	8AM-3:30AM*	5AM (June 17)
June 19	8AM - 4PM	4PM-5AM*	8AM-2:30AM*	5AM (June 20)
June 22	8AM - 4PM	4PM-5AM*	8AM-2:30AM*	5AM (June 23)
June 25	8AM - 3PM	3PM-5AM*	8AM-1:30AM*	5AM (June 26)
July 1	8AM - 1PM	1PM-5AM*	8AM-11:30PM	5AM (July 2)

**Phase 1:** Tasman Closure from Great America Pkwy to Calle Del Sol

**Phase 2:** Expanded Tasman Closure from Great America Pkwy to Lick Mill Blvd

\* Following day.

*Safety and security associated with the 2026 FIFA World Cup will require the temporary closure of public infrastructure around SF Bay Area Stadium.*

