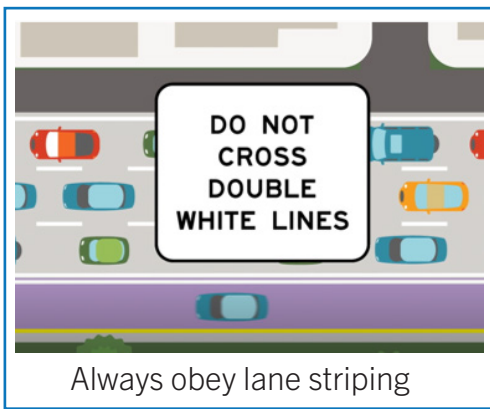


## WHERE DO I GET IN AND OUT OF THE EXPRESS LANES?

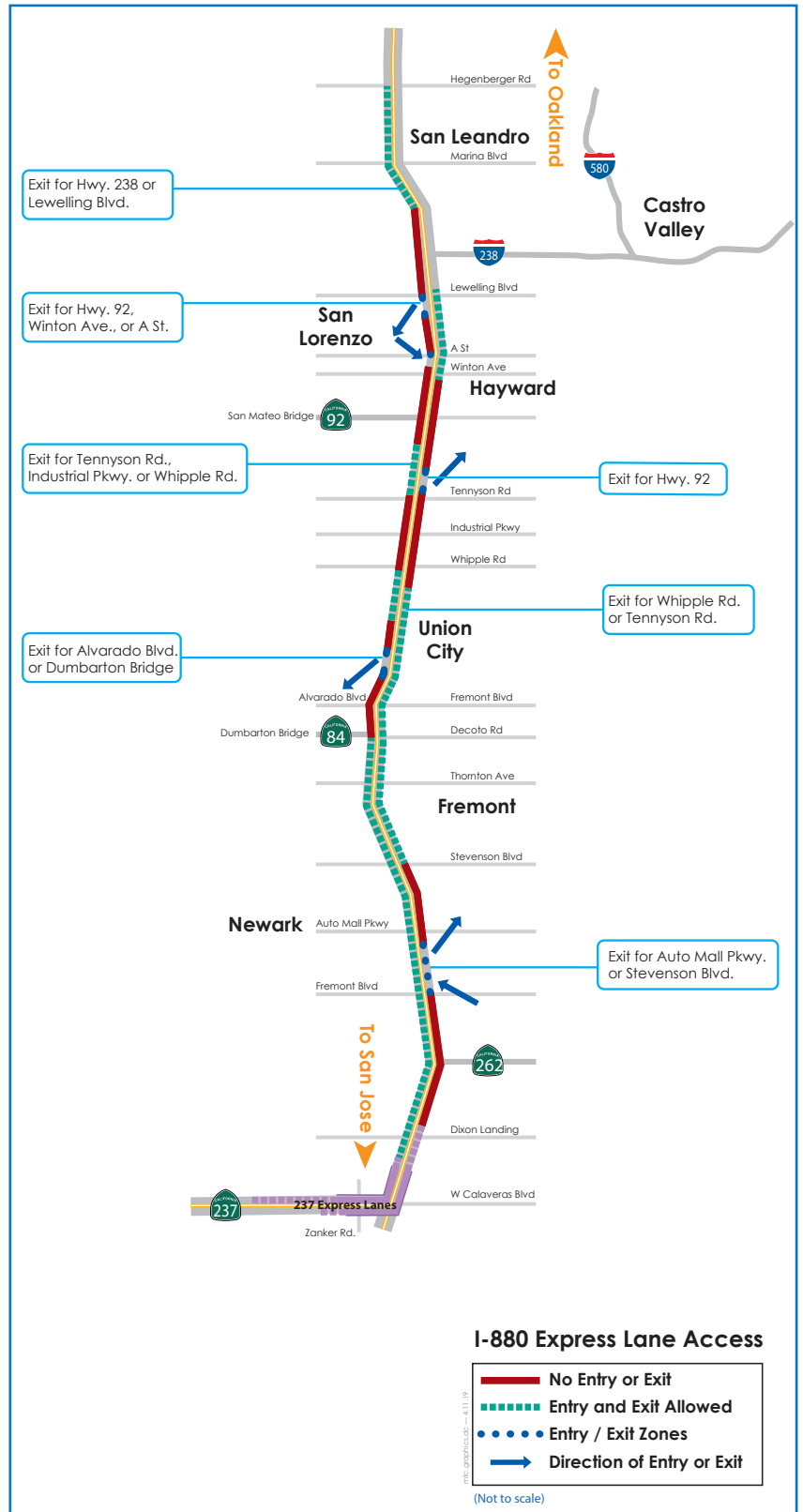
The map to the right shows in red where the express lanes are separated from the other lanes by double white lines, which are illegal to cross.

The map shows in blue where there are specially striped zones to guide cars into or out of the express lanes.



## HOW DO I KNOW WHERE TO GET OUT OF THE EXPRESS LANE SO I DON'T MISS MY EXIT?

Median barrier signs show drivers where they need to get out of the express lane to access highway exits.

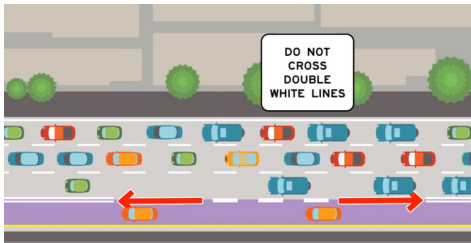
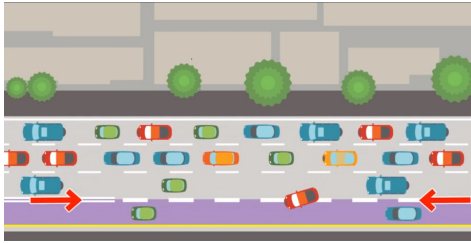


### I-880 Express Lane Access

- No Entry or Exit
- - - Entry and Exit Allowed
- Entry / Exit Zones
- Direction of Entry or Exit

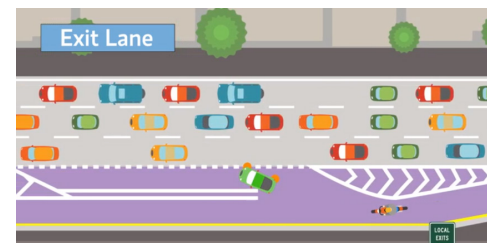
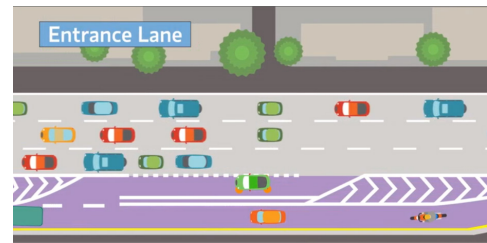
(Not to scale)

## WHAT DOES THE STRIPING LOOK LIKE? WHAT DOES IT MEAN?



Dashed white lines show where it is OK to merge into or out of the express lanes.

Double white lines show where it is illegal to merge into or out of the express lanes.



Entrance and exit lanes provide a buffer between the express lane and the next lane to help cars move into or out of the express lanes.

## HOW CAN I STAY INFORMED ABOUT THE I-880 EXPRESS LANES?

- Follow 511 on Facebook
- Follow MTC on Facebook, Twitter, YouTube, and Instagram
- Watch our educational videos at <https://www.youtube.com/user/mtcabaglibrary>
- Sign-up for e-mails about the I-880 Express Lanes at [service.govdelivery.com/accounts/CAMTC/subscriber/session/new](https://service.govdelivery.com/accounts/CAMTC/subscriber/session/new)



*Learn more at [expresslanes.511.org](https://expresslanes.511.org)*

Find MTC on

