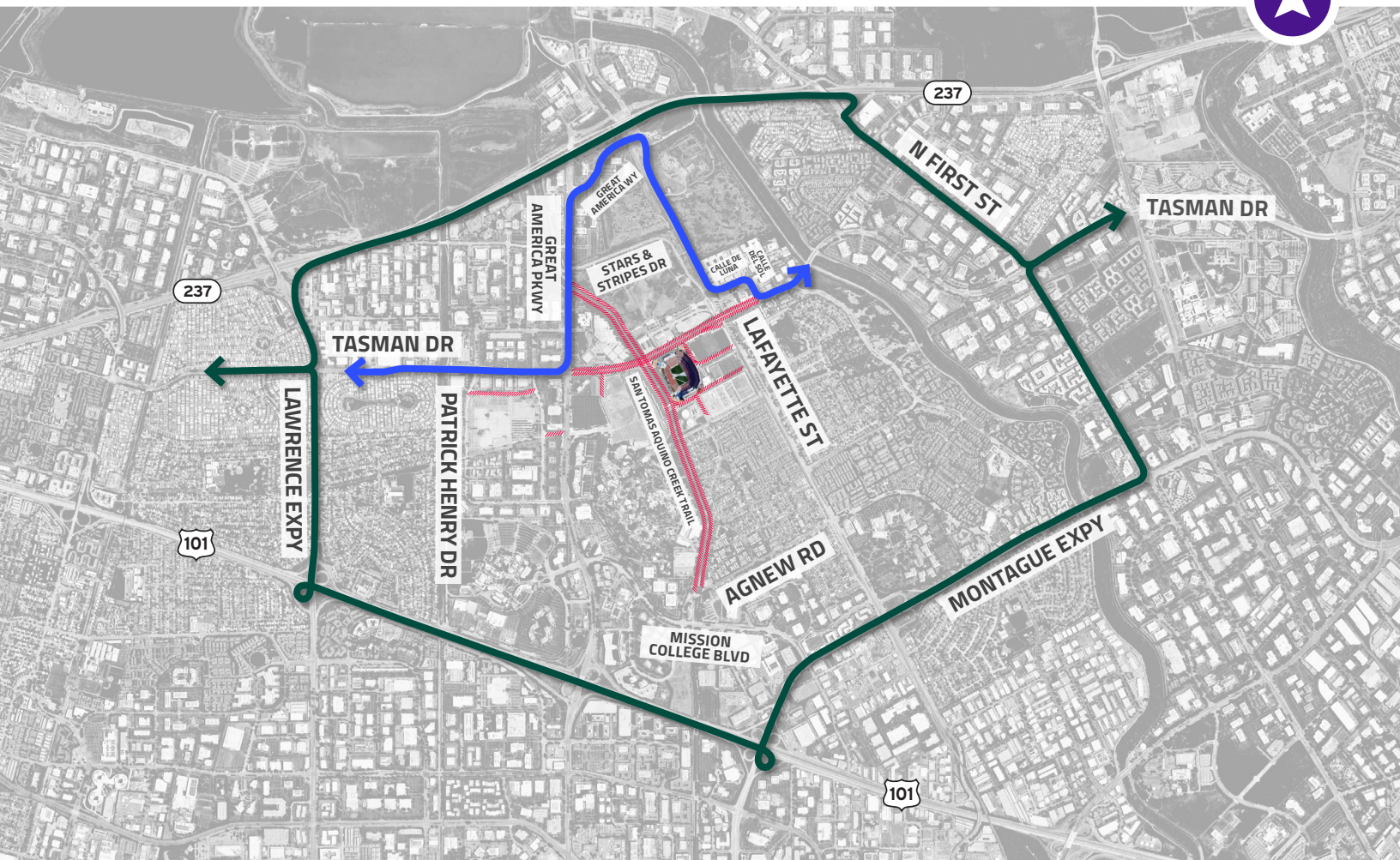


# NOTICE: MATCH DAY CLOSURE – PHASE 1



**LEGEND:** ■ Regional Detour | ■ Local Detour | // Road Closures

**THIS PHASE 1 CLOSURE WILL BE IN EFFECT FOR MATCH DAY. REFER TO CLOSURE TABLE SCHEDULE.**  
 To learn more about the road closures impacting the Santa Clara area for the 2026 FIFA World Cup, please visit:  
<https://www.sfbayareafc26.com/transit>

Closures will occur in two phases. During Phase 1, a closure of Tasman Drive and the Stars and Stripes Slip Ramp will be required on Match days. Two detours will be posted to support this closure. A Local Detour will be in place at the east and west ends of the closure and will utilize Great America Way, Great America Parkway, Lafayette Street, and Calle De Luna/Calle Del Sol to bypass the closure to the north. A Regional Detour will be posted in advance of the closures and will alert drivers to take alternative routes to avoid potential delays associated with the closure. The routes include the 101, 237, and local arterial roadways. Detour signage will be posted along the local detour route.



Scan for more details

## MATCH DAY CLOSURE SCHEDULE

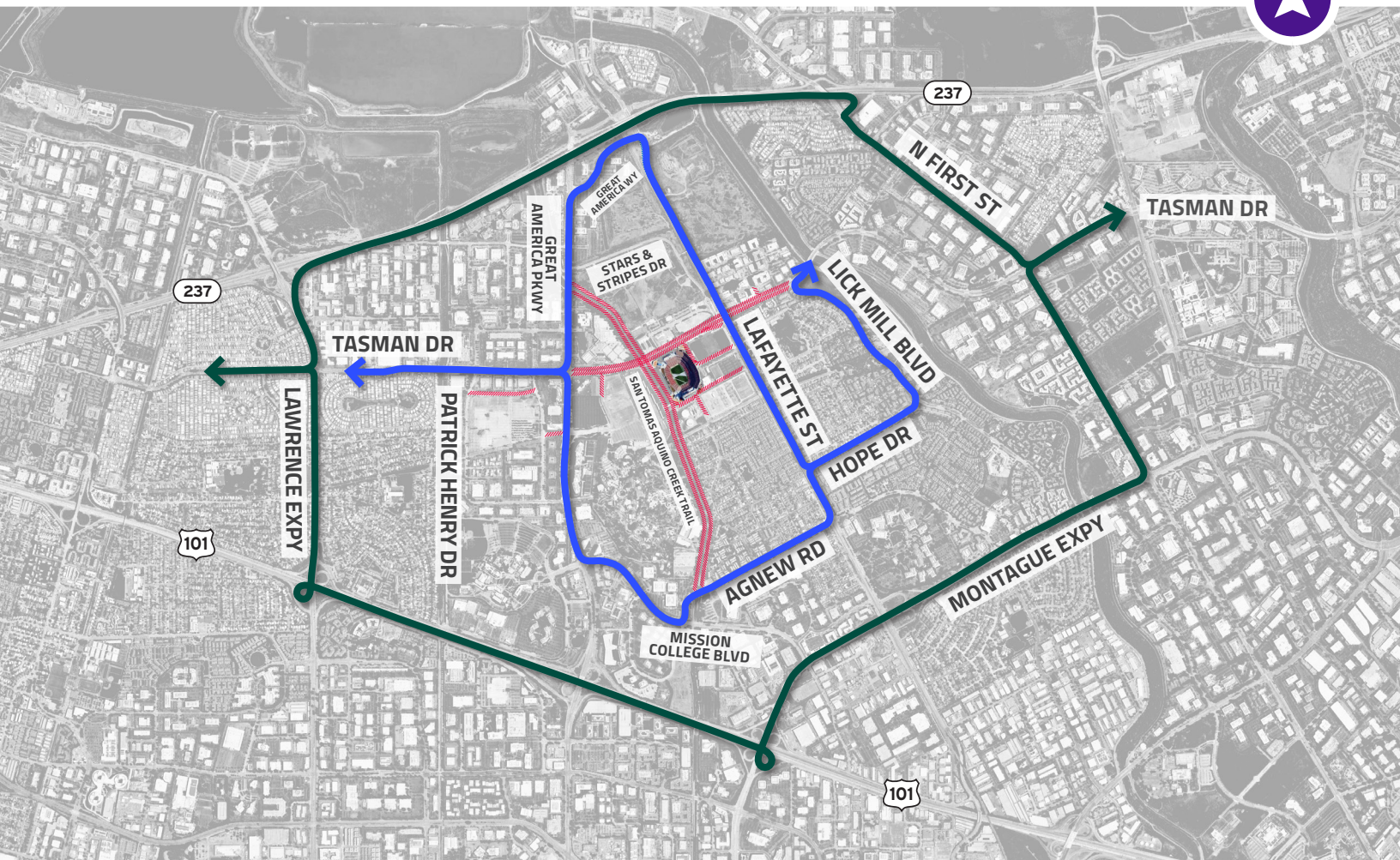
DATE	PHASE 1	PHASE 2	STACT CLOSURE	TASMAN REOPEN
June 13	12AM - 8AM	8AM-10PM	6AM-6:30PM	10PM (June 13)
June 16	8AM - 5PM	5PM-5AM*	8AM-3:30AM*	5AM (June 17)
June 19	8AM - 4PM	4PM-5AM*	8AM-2:30AM*	5AM (June 20)
June 22	8AM - 4PM	4PM-5AM*	8AM-2:30AM*	5AM (June 23)
June 25	8AM - 3PM	3PM-5AM*	8AM-1:30AM*	5AM (June 26)
July 1	8AM - 1PM	1PM-5AM*	8AM-11:30PM	5AM (July 2)

**Phase 1:** Tasman Closure from Great America Pkwy to Calle Del Sol  
**Phase 2:** Expanded Tasman Closure from Great America Pkwy to Lick Mill Blvd  
 \* Following day.

*Safety and security associated with the 2026 FIFA World Cup will require the temporary closure of public infrastructure around SF Bay Area Stadium.*



# NOTICE: MATCH DAY CLOSURE – PHASE 2



**LEGEND:** ■ Regional Detour | ■ Local Detour | // Road Closures

**THIS PHASE 2 CLOSURE WILL BE IN EFFECT FOR MATCH DAY. REFER TO CLOSURE TABLE SCHEDULE.**  
 To learn more about the road closures impacting the Santa Clara area for the 2026 FIFA World Cup, please visit:  
<https://www.sfbayareafc26.com/transit>

Closures will occur in two phases. During Phase 2, a closure of Tasman Drive and the Stars and Stripes Slip Ramp will be required on Match days. Two detours will be posted to support this closure. Match Day Phase 1 will be adjusted to reflect the closure of Calle Del Sol to general traffic and the suggested use of Lick Mill Boulevard. Local resident and business access will be maintained. Posted detours will be provided along multiple routes to provide local residents and businesses with alternatives that are most convenient for them during the closure period. The Regional Detour will remain the same, providing alternative routes to drivers who do not have a local area destination.



Scan for more details

## MATCH DAY CLOSURE SCHEDULE

DATE	PHASE 1	PHASE 2	STACT CLOSURE	TASMAN REOPEN
June 13	12AM - 8AM	8AM-10PM	6AM-6:30PM	10PM (June 13)
June 16	8AM - 5PM	5PM-5AM*	8AM-3:30AM*	5AM (June 17)
June 19	8AM - 4PM	4PM-5AM*	8AM-2:30AM*	5AM (June 20)
June 22	8AM - 4PM	4PM-5AM*	8AM-2:30AM*	5AM (June 23)
June 25	8AM - 3PM	3PM-5AM*	8AM-1:30AM*	5AM (June 26)
July 1	8AM - 1PM	1PM-5AM*	8AM-11:30PM	5AM (July 2)

**Phase 1:** Tasman Closure from Great America Pkwy to Calle Del Sol

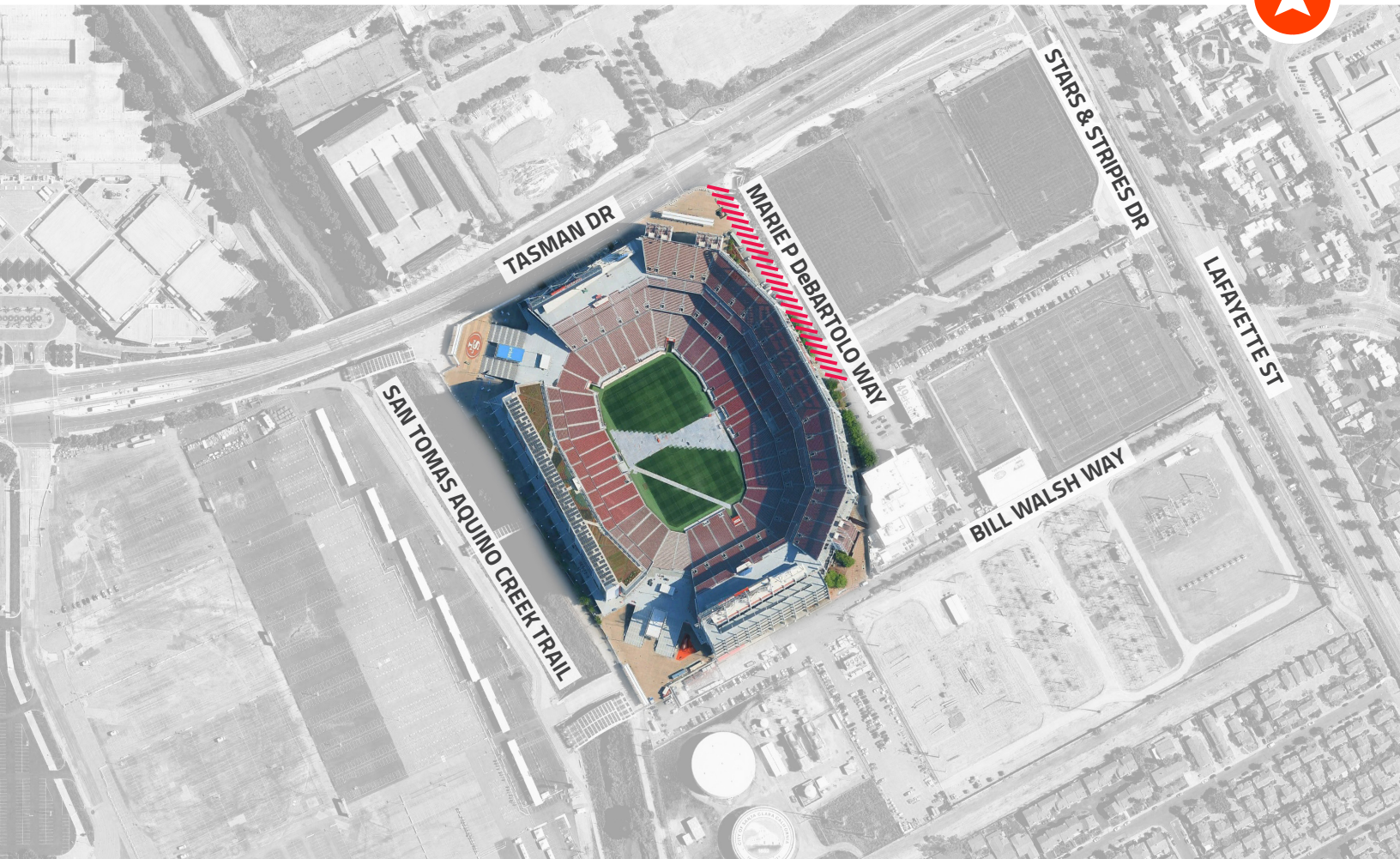
**Phase 2:** Expanded Tasman Closure from Great America Pkwy to Lick Mill Blvd

\* Following day.

*Safety and security associated with the 2026 FIFA World Cup will require the temporary closure of public infrastructure around SF Bay Area Stadium.*



# NOTICE: ROAD CLOSURE



**LEGEND:**  Road Closure

**Marie P DeBartolo Way will be closed from May 25 to July 3, 2026.**

To learn more about the road closures impacting the Santa Clara area for the 2026 FIFA World Cup, please visit:  
<https://www.sfbayareafwc26.com/transit>

To support safety and security associated with the 2026 FIFA World Cup, a closure of Marie P DeBartolo Way will be required from May 25th thru July 3rd. Access to the areas east of the stadium will be provided via Stars and Stripes Drive.



*Scan for more details*

*Safety and security associated with the 2026 FIFA World Cup will require the temporary closure of public infrastructure around SF Bay Area Stadium.*

