



TRAFFIC ADVISORY

Date: January 15, 2021
District: 4-Oakland
Contact: Alejandro Lopez
alejandro.lopez@dot.ca.gov
Phone: (510) 385-6856

FOR IMMEDIATE RELEASE

State Route 1-Tom Lantos (Devil's Slide) Tunnels Mandatory Emergency Response Drill-Overnight Tunnel Closures Starts Tuesday, January 26 at 9:00 PM

SAN MATEO COUNTY - The California Department of Transportation (Caltrans Bay Area) will conduct its annual mandatory emergency response drill at the State Route 1 (SR-1) Tom Lantos (Devil's Slide) Tunnels.

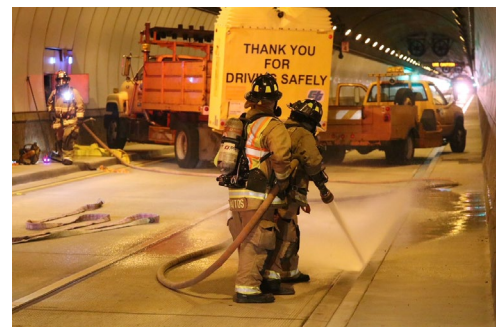
The mandatory seven-hour emergency response drill begins Tuesday, January 26 at 9:00 PM Tuesday and concludes on Wednesday, January 27 at 4:00 AM. The exercise is weather permitting.

For the safety of crews and the public, northbound and southbound traffic lanes on SR-1 through the Tom Lantos (Devil's Slide) Tunnels will be closed during the exercise.

Lantos Tunnel-Detour Routes:

During the tunnel closures, the following detours between Pacifica and Half Moon Bay will be in effect. The California Highway Patrol (CHP) will be on scene to assist motorists:

- From Pacifica: North on SR-1 to southbound on Interstate-280 (I-280)
- From Half Moon Bay: East on State Route 92 (SR-92) onto northbound (I-280)



Tom Lantos Tunnels Emergency Drill

The emergency management exercise will be a coordinated effort including the CHP, San Mateo County Sheriff's Office, Pacifica Fire and Police Departments, California Office of Emergency Services, Cal-Fire and other first responders.

This exercise will include fire simulations, crash simulations and smoke.

For real-time traffic click-on Caltrans Quick Map: <http://quickmap.dot.ca.gov>
Or follow us on Twitter: @CaltransD4

Caltrans thanks you for your patience as we work to maintain California's highways, bridges and tunnels. Please #BeWorkZoneAlert

###