



State of California • Department of Transportation

Traffic Advisory

Date: Jan. 5, 2024

District: 4

Contact: Matt O'Donnell/ Pedro Quintana

Phone: (510) 852-5113/ (510) 867-6028

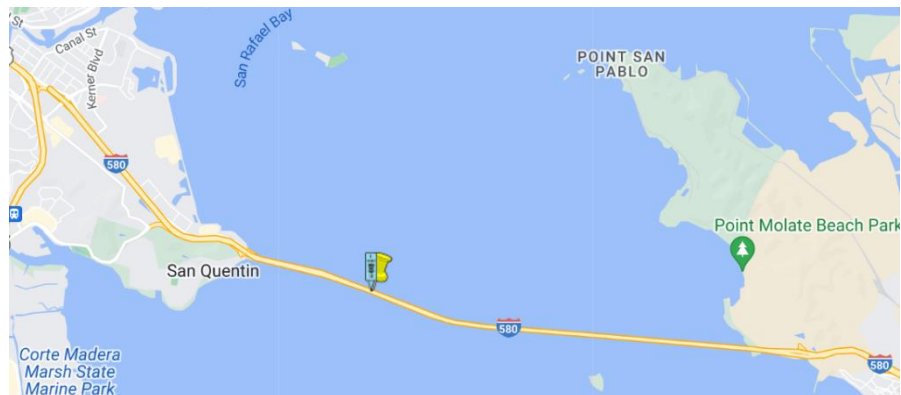
FOR IMMEDIATE RELEASE

Nightly Lane Closures on Richmond/San Rafael Bridge as Repairs Continue on EB, WB Interstate 580 (I-580) Due to Deck Work

Schedule: Work will continue Friday, Jan. 5 from 7 p.m. to 5 a.m.

MARIN COUNTY AND CONTRA COSTA COUNTY — Two lanes on Eastbound Interstate 580 (I-580) near Pier 21 are scheduled to close on **Friday, Jan. 5** and **Saturday, Jan. 6** from **7 p.m.** until **5 a.m.** the next mornings on the Richmond/San Rafael Bridge because of a large pothole that affected the bridge deck.

Two left lanes on Eastbound I-580 are scheduled to be closed from **Monday, Jan. 8** through **Thursday, Jan. 11**, from **7 p.m.** until **5 a.m.** each night. The right lane on Westbound I-580 on the bridge is scheduled to be closed on those same days and times next week.



The lane closures are needed to perform repairs to the Westbound I-580 bridge deck.

The bicycle lane on the Richmond/San Rafael Bridge on Westbound I-580 will be closed during construction hours to allow Caltrans crews to complete their work.

The bike lane on the bridge is bidirectional, located on the upper deck, or westbound, direction of the bridge.

During the closure, Caltrans will operate a bike shuttle to transport cyclists and their bikes. Pickup/drop-off stations will be located at each end of the bridge: In Richmond at the Stenmark Drive bridge entrance and in San Rafael at the Vista Point.

Changeable message signs in the area will be activated to assist motorists. Drivers should expect delays.

For real-time traffic, click on Caltrans QuickMap: <http://quickmap.dot.ca.gov/>

| CleanCA.com | [#BeWorkZoneAlert](https://twitter.com/BeWorkZoneAlert) | [Twitter](https://twitter.com) | [Facebook](https://www.facebook.com) | [YouTube](https://www.youtube.com) |