



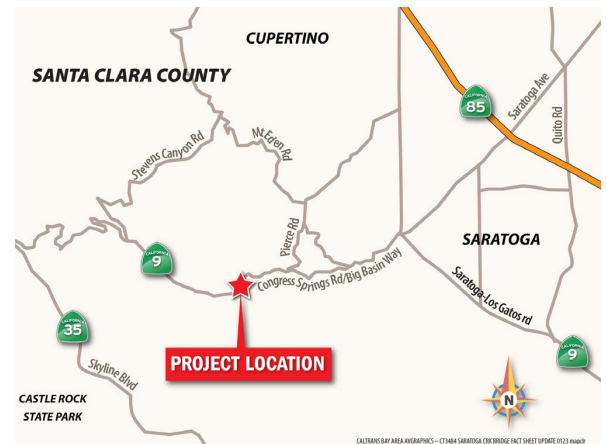
TRAFFIC ADVISORY

Date: April 30, 2024
District: 4 - Oakland
Contact: Saratogaproject@dot.ca.gov

FOR IMMEDIATE RELEASE

**FULL OVERNIGHT HIGHWAY CLOSURE OF STATE ROUTE 9 AT SARATOGA CREEK BRIDGE
BETWEEN BIG BASIN WAY and SANBORN ROAD STARTING AT 9 PM, Monday, MAY 6**
(Overnight Closure will begin Mon., May 6 Through, Wed. May 9.)

Santa Clara County. Caltrans will perform full overnight closures on State Route 9 at Saratoga Creek Bridge between Big Basin Way and Sanborn Road, in the city of Saratoga, Santa Clara County starting at 9 PM, Monday, May 6 through Thursday, May 9,. The overnight closures are needed to allow crews to safely perform paving operations on the [Saratoga Creek Bridge Rehabilitation project](#). The full overnight highway closures are scheduled to be completed by Thursday, May 9, at 7 AM. Motorists are advised to expect delays and allow extra time when traveling.



Overnight Closures SR-9 Saratoga Creek Bridge

Monday, May 6, 9:00 PM to Tuesday, May 7, 7:00 AM
Tuesday, May 7, 9:00 PM to Wednesday, May 8, 7:00 AM
Wednesday, May 8, 9:00 PM to Thursday, May 9, 7:00 AM

Emergency vehicles and local residents will have access to Sanborn Road.

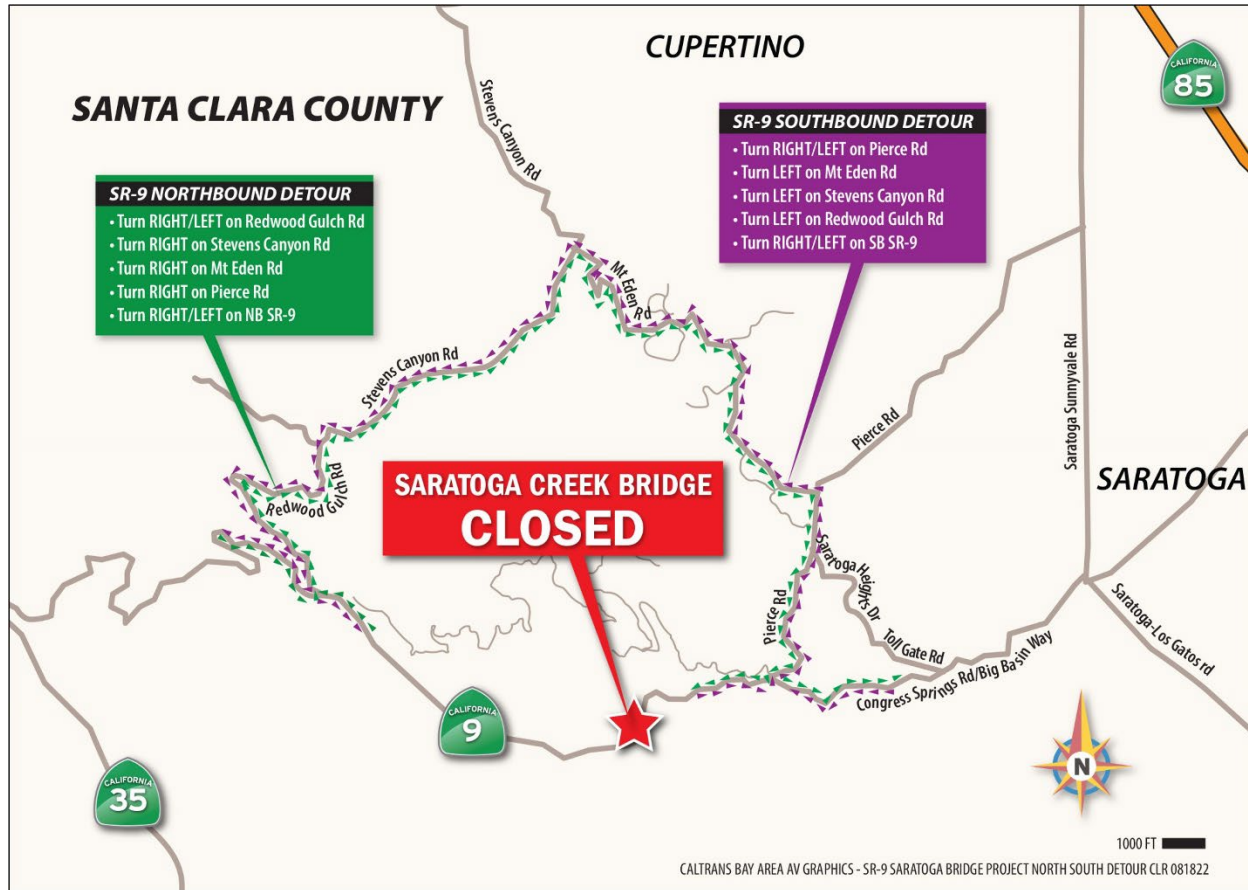
CMS Signs and detours will be in place

A detour will also be in place for large trucks, detour routes can be found on State Route 9 Saratoga Project webpage: <https://dot.ca.gov/caltrans-near-me/district-4/d4-projects/d4-santa-clara-sr9-saratoga-creek-bridge> For 24/7 traffic updates, follow 511.org: <https://twitter.com/511SFBAY>. For real-time traffic, click-on Caltrans QuickMap: <http://quickmap.dot.ca.gov/>.



TRAFFIC ADVISORY

Detours:



#BeWorkZoneAlert

###



BE WORK ZONE ALERT

